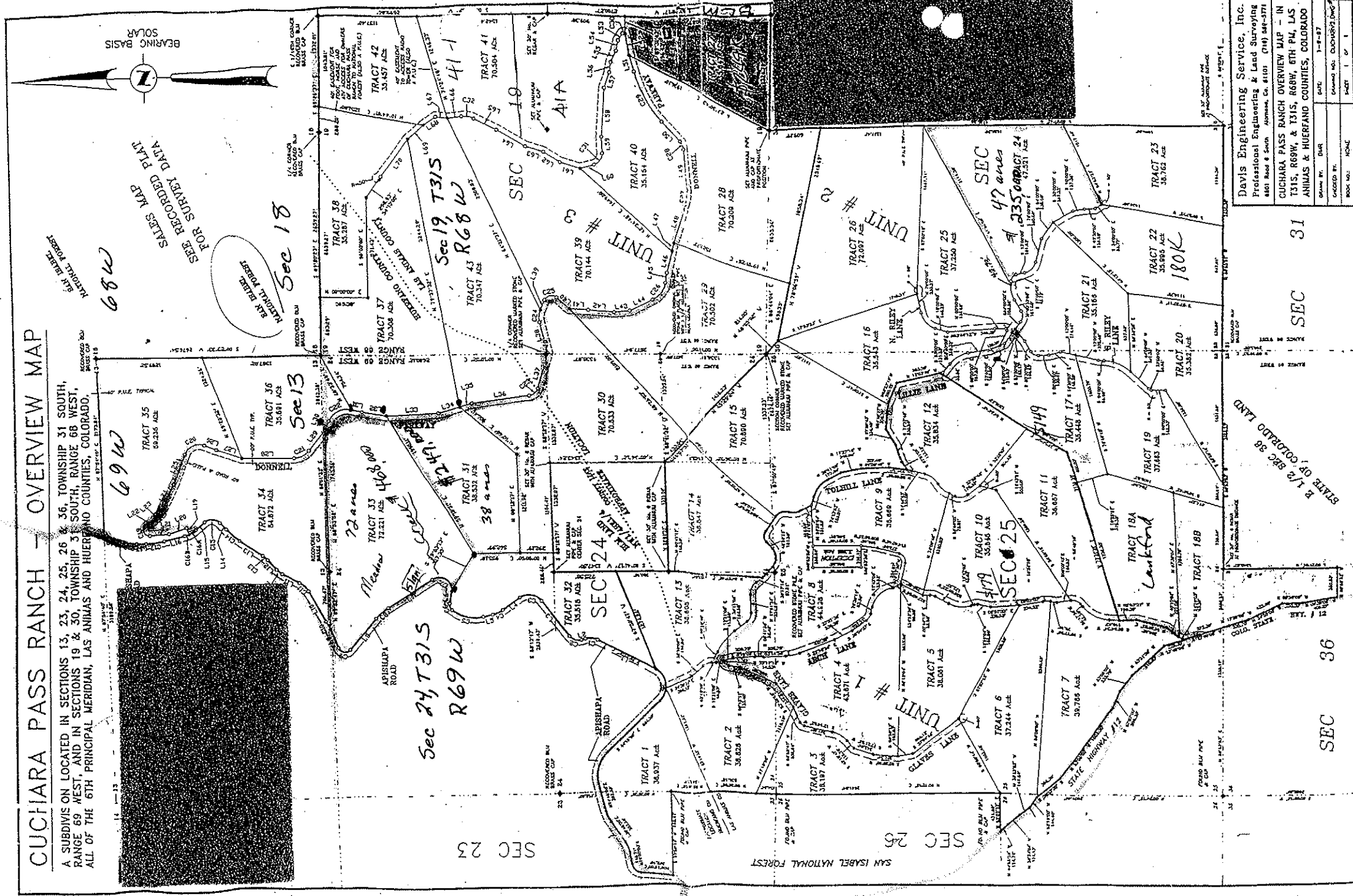


# CUCHIARA PASS RANCH - OVERVIEW MAP

A SUBDIVISION LOCATED IN SECTIONS 13, 23, 24, 25, 26 & 36, TOWNSHIP 31 SOUTH, RANGE 69 WEST, AND IN SECTIONS 19 & 30, TOWNSHIP 31 SOUTH, RANGE 68 WEST, ALL OF THE 6TH PRINCIPAL MERIDIAN, LAS ANIMAS AND HUERFANO COUNTIES, COLORADO.



Davis Engineering Service, Inc.  
 Professional Engineering & Land Surveying  
 8401 Road 8 South, Animas Co., #1101 (719) 589-5771  
 CUCHIARA PASS RANCH OVERVIEW MAP - IN  
 T31S, R69W, & T31S, R68W, 6TH PM, LAS  
 ANIMAS & HUERFANO COUNTIES, COLORADO  
 SHEET NO. 1 OF 1  
 DATE: 1-1-87  
 DRAWING NO.: CUCHIARA OVERVIEW  
 SCALE: AS SHOWN

450' etc.

719/589-5771  
 8801 Road 8 South, Animas Co. 81101